

Product Description

BRAF(G469E)

Catalog Number: 26196

Gene Symbol: BRAF, BRAF1, RAFB1

Description: Anti-BRAF(G469E) Mouse Monoclonal Antibody

Background BRAF belongs to a family of serine-threonine protein kinases. As a part of a signaling pathway known as the RAS/MAPK pathway, it plays an important part in many cellular processes. The processes include cell proliferation, differentiation, and transcriptional regulation. Mutations in the BRAF gene cause diseases. Inherited mutations in BRAF cause cardiofaciocutaneous syndrome. Acquired mutations in BRAF have been found in cancers.

Immunogen: A synthetic peptide from the internal region of BRAF which includes the mutation of G469E, human origin.

Tested Applications: ELISA, WB, IF, IHC

Recommended Dilutions:

ELISA:	1:1000-1:5000
WB:	1:500-1:1000
IF:	1:50-1:100
IHC:	1:50-1:100

Concentration: 1 mg/ml

Host: Mouse

Clonality: Monoclonal

Isotype: IgG

Purity: Purified from ascites

Format: Liquid

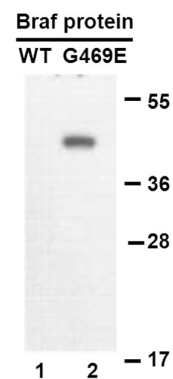
Preservative: No

Constituents: PBS (without Mg²⁺ and Ca²⁺), pH7.4, 150 mM NaCl, 50% glycerol

Species Reactivity: Recognizes G469E mutant, but not wild-type BRAF of vertebrates.

Storage Conditions: Store at -20°C. Avoid freeze / thaw cycles.

Western blot:



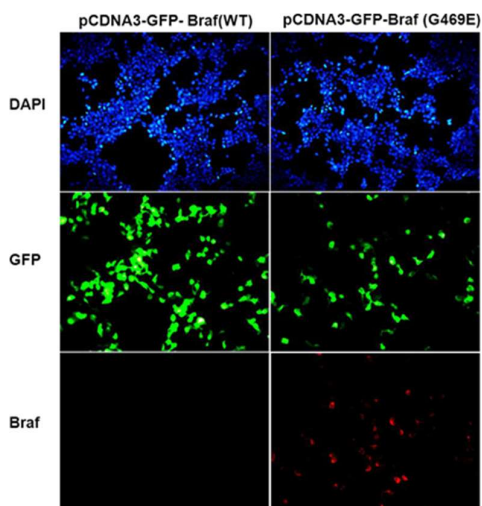
WB: anti-Braf (G469E) mAb

Western blot analysis of recombinant BRAF (G469E) and wild type proteins.

Purified His-tagged BRAF (G469E) protein (lane 2) and corresponding wild type protein (lane 1) was blotted with anti-BRAF (G469E) monoclonal antibody (Cat. # 26196).

FOR RESEARCH USE ONLY. NOT FOR DIAGNOSTIC APPLICATIONS

Immunofluorescence:



Immunofluorescence of cells expressing BRAF proteins with anti-BRAF (G469E) antibody.

HEK293T cells were transfected with pCDNA3-GFP-BRAF (WT) plasmid (left column) or pCDNA3-GFP-BRAF (G469E) plasmid (right column), then fixed and stained with anti-BRAF(G469E) monoclonal antibody (Cat. # 26196).

FOR RESEARCH USE ONLY. NOT FOR DIAGNOSTIC APPLICATIONS